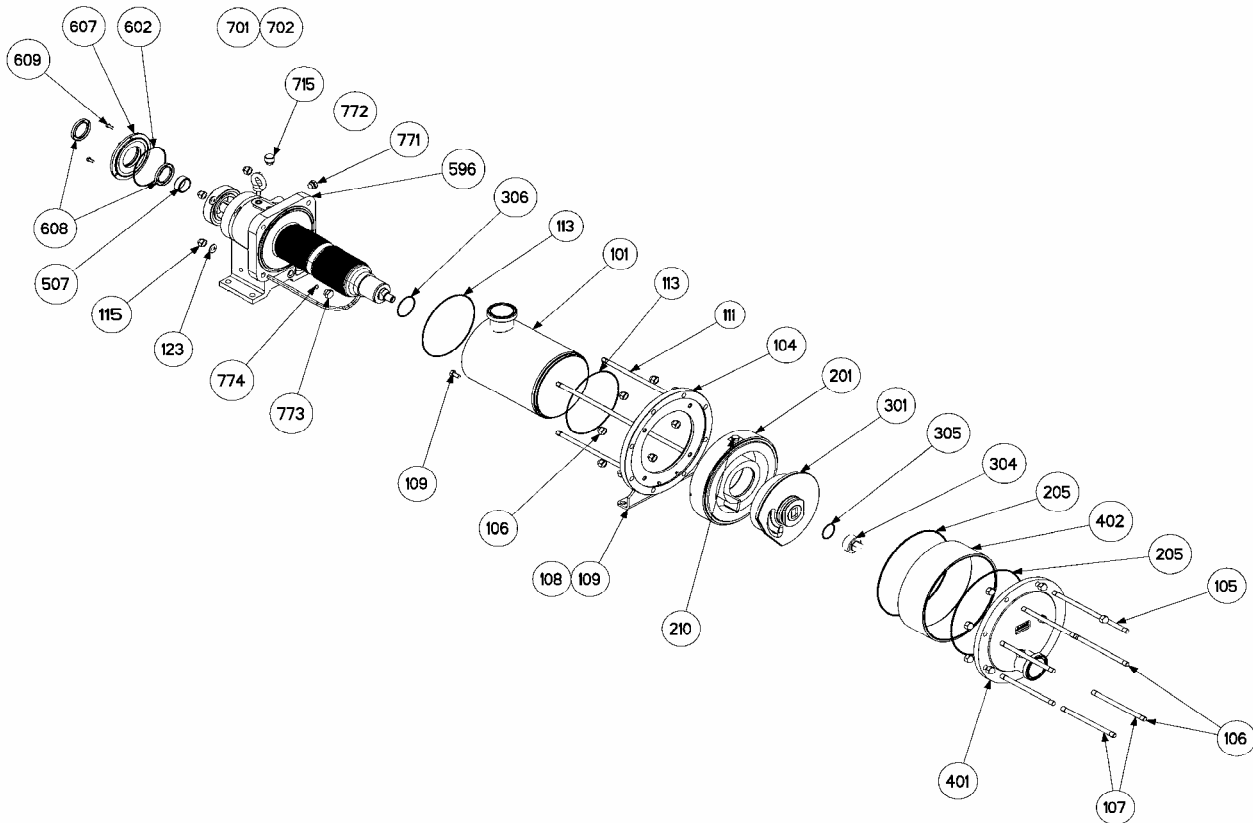


(See Instructions 1001-C00 for Installation, Operation and Maintenance)

Section	1001
Effective	May 2007
Replaces	October 2005



Reference			Description	Quantity		ARTICLE CODE		Wear parts
Ass.	Part	Available		Order	In Pump	C24 i	C36 i	
100		◆	Inlet Manifold PN16 DN80	1		312182.00		
100		◆	Inlet Manifold PN20 DN80	1		312230.00		
100		◆	Inlet Manifold SMS 76	1		312228.00		
100		◆	Inlet Manifold DIN 80	1		312236.00		
100		◆	Inlet Manifold CHERRY BUREL 76	1		312232.00		
100		◆	Inlet Manifold CLAMP ISO 76	1		312234.00		
100		◆	Inlet Manifold ASEPTIK DIN 11864-BF-A DN80	1		313715.00		
100		◆	Inlet Manifold CS F DN80	1		313910.00		
100		◆	Inlet Manifold BS4825-5 DN80	1		313995.00		
100		◆	Jacketed Inlet Manifold PN16 DN80	1		312906.05		
100		◆	Jacketed Inlet Manifold PN20 DN80	1		312908.05		
100		◆	Jacketed Inlet Manifold SMS 76	1		312907.05		
100		◆	Jacketed Inlet Manifold DIN 80	1		312910.05		
100		◆	Jacketed Inlet Manifold CHERRY BUREL 76	1		312909.05		
100		◆	Jacketed Inlet Manifold CLAMP ISO 76	1		312911.05		
100		◆	Jacketed Inlet Manifold CS F DN80	1		313912.00		
100		◆	Jacketed Inlet Manifold BS4825-5 DN80	1		313997.00		
100		◆	Jacketed Inlet Manifold ASEPTIK DIN 11864-BF-A DN80	1		313716.00		
	101		Main body		(1)			
	104		Main body flange		(1)			
	108		Support foot		(1)			
	109		Screw		(2)			
	117		Pin		(1)			
	118		Pin		(1)			
	124		Plug (with Jacketed Inlet)		(2)			
119		◆	<b>Set of studs and nuts</b>	1		312184.00	312260.00	
	105		Stud		(6)			
	106		Blind nut		(16)			
	107		Stud		(2)			
	111		Stud		(4)			
	115		Blind nut		(4)			
	123		Washer		(4)			

(◆) Sets of parts or (▲) parts available to order

Reference			Description	Quantity		ARTICLE CODE		Wear parts
Ass.	Part	Available		Order	In Pump	C24 i	C36 i	
200		◆	<b>Set cylinder/Piston</b>	1		313401.00	313403.00	●
	201		Cylinder		(1)			
	210		Screw		(1)			
	301		Piston		(1)			
	304	▲	Piston nut	1		219426	219455	
206		◆	<b>Set of FKM 'O' ring seals</b>	1		312246.00		●
206		◆	<b>Set of CVT 'O' ring seals</b>	1		312190.00		●
206		◆	<b>Set of FKM lip seals ('L' rings) FDA</b>	1		312501.01		●
206		◆	<b>Set of L PTFE 'O' ring seals</b>	1		312779.05		●
	113		Seal		(2)			
	205		Seal Ring		(2)			
	305		Seal		(1)			
	306		Seal		(1)			
400		◆	<b>Front Cover Plate PN16 DN80</b>	1		312191.00		
400		◆	<b>Front Cover Plate PN20 DN80</b>	1		312255.00		
400		◆	<b>Front Cover Plate SMS 76</b>	1		312247.00		
400		◆	<b>Front Cover Plate DIN 80</b>	1		312253.00		
400		◆	<b>Front Cover Plate CHERRY BURREL 76</b>	1		312249.00		
400		◆	<b>Front Cover Plate CLAMP ISO 76</b>	1		312251.00		
400		◆	<b>Front Cover Plate ASEPTIK DIN 11864-BF-A DN80</b>	1		313717.00		
400		◆	<b>Front Cover Plate CS F DN80</b>	1		313914.00		
400		◆	<b>Front Cover Plate BS4825-5 DN80</b>	1		313999.00		
400		◆	<b>Jacketed Front Cover Plate PN16 DN80</b>	1		312918.05		
400		◆	<b>Jacketed Front Cover Plate PN20 DN80</b>	1		312923.05		
400		◆	<b>Jacketed Front Cover Plate SMS 76</b>	1		312919.05		
400		◆	<b>Jacketed Front Cover Plate DIN 80</b>	1		312922.05		
400		◆	<b>Jacketed Front Cover Plate CHERRY BURREL 76</b>	1		312920.05		
400		◆	<b>Jacketed Front Cover Plate CLAMP ISO 76</b>	1		312921.05		
400		◆	<b>Jacketed Front Cover Plate ASEPTIK DIN 11864-BF-A DN80</b>	1		313718.00		
400		◆	<b>Jacketed Front Cover Plate CS F DN80</b>	1		313936.00		
400		◆	<b>Jacketed Front Cover Plate BS4825-5 DN80</b>	1		314001.00		
	401		Front cover		(1)			
	402		Outlet tube		(1)			
	407		Plug (with Jacketed Front Cover)		(1)			
596		◆	<b>Complete transmission</b>	1		312699.06		
596		◆	<b>Complete transmission + Bellows monitoring system</b>	1		313466.00		
596		◆	<b>Complete transmission + ATEX Bellows monitoring system</b>	1		313827.00		
	9	◆	Bearing gaskets / screws	1		312372.03		
	507		Ring		(1)			
	602		Gasket		(1)			
	608		Lip seal		(2)			
	609		Bearing screws		(3)			
	8	◆	<b>Plugs + gasket</b>	1		312196.00		
	701		Lifting eye bolts		(1)			
	702		Copper-plated gasket		(1)			
	715		Breather		(1)			
	773		Drain plug		(1)			
	774		Copper-plated gasket		(1)			

CVT - FEP encapsulated FKM ; FDA : Food and Drug Administration (21 CFR 177 2600)

(◆) Sets of parts or (▲) parts available to order

Keep this parts lists with Installation, Operation and Maintenance Instructions

To order the required spare parts, indicate the appropriate CUM numbers



ZI la Plaine des Isles - 2 Rue des Caillottes 89000 AUXERRE - **France**  
Tél. : +33 3.86.49.86.40 or +33 3 86.49.87.09 - Fax : +33 3.86.49.87.17  
E-Mail : contact@blackmer-mouvex.com Internet : www.blackmer.com

1809 Century Avenue, Grand Rapids, Michigan 49503-1530, **U.S.A.**  
Telephone: (616) 241-1611 / Fax: (616) 241-3752  
E-Mail: blackmer@blackmer.com / Internet: www.blackmer.com