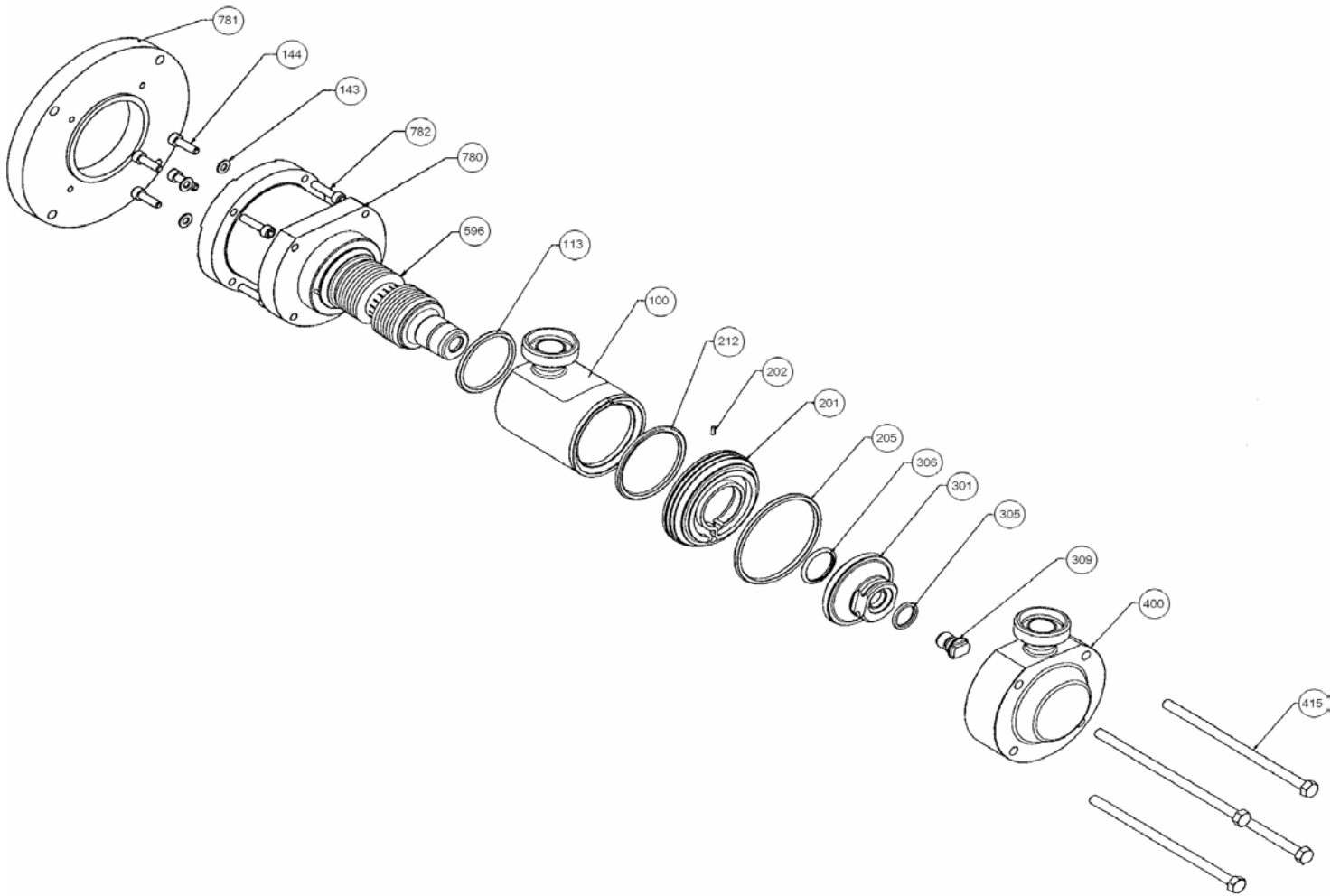


Section	1001
Effective	November 2007
Replaces	May 2007

(See Instructions 1001-P00 for Installation, Operation and Maintenance)



Reference			Description	Quantity		ARTICLE CODE	Wear parts
Ass.	Part	Available		Order	In Pump	MICRO C 125-250-500-800	
100		◆	Inlet Manifold DIN20	1		313828.00	
100		◆	Inlet Manifold CLAMP DN20	1		313829.00	
100		◆	Inlet Manifold 1/2" BSP	1		313830.00	
100		◆	Inlet Manifold 1/2" NPT	1		313831.00	
100		◆	Inlet Manifold SMS25	1		313918.00	
100		◆	Inlet Manifold CL ISO25	1		314046.00	
100		◆	Inlet Manifold CS F DN20	1		313949.00	
100		◆	Inlet Manifold BS4825-5 DN20	1		313977.00	
	102		Inlet tube		(1)		
	103		Connection		(1)		

(◆) Sets of parts or (▲) parts available to order

Reference			Description	Quantity		ARTICLE CODE	Wear parts
Ass.	Part	Available		Order	In Pump	MICRO C 125-250-500-800	
200		◆	<b>Set cylinder/Piston C125</b>	1		313836.00	●
	201		Cylinder		(1)		
	301		Piston		(1)		
	310	◆	Seal / Piston screw		(1)	313888.00	
	308		Seal		(1)		
	309		Piston screw		(1)		
200		◆	<b>Set cylinder/Piston C250</b>	1		313837.00	●
	201		Cylinder		(1)		
	301		Piston		(1)		
	310	◆	Seal / Piston screw		(1)	313888.00	
	308		Seal		(1)		
	309		Piston screw		(1)		
200		◆	<b>Set cylinder/Piston C500</b>	1		313838.00	●
	201		Cylinder		(1)		
	301		Piston		(1)		
	310	◆	Seal / Piston screw		(1)	313888.00	
	308		Seal		(1)		
	309		Piston screw		(1)		
200		◆	<b>Set cylinder/Piston C800</b>	1		314448.00	●
	201		Cylinder		(1)		
	301		Piston		(1)		
	310	◆	Seal / Piston screw		(1)	313888.00	
	308		Seal		(1)		
	309		Piston screw		(1)		
206		◆	<b>Set of FKM 'O' ring seals</b>	1		313839.00	●
206		◆	<b>Set of CVT 'O' ring seals</b>	1		313840.00	●
	113		Seal		(1)		
	205		Seal Ring		(1)		
	212		Seal		(1)		
	305		Seal		(1)		
	306		Seal		(1)		
400		◆	<b>Front Cover Plate DIN20</b>	1		313832.00	
400		◆	<b>Front Cover Plate CLAMP DN20</b>	1		313833.00	
400		◆	<b>Front Cover Plate 1/2" BSP</b>	1		313834.00	
400		◆	<b>Front Cover Plate 1/2" NPT</b>	1		313835.00	
400		◆	<b>Front Cover Plate SMS25</b>	1		313919.00	
400		◆	<b>Front Cover Plate CL ISO25</b>	1		314047.00	
400		◆	<b>Front Cover Plate CS F DN20</b>	1		313950.00	
400		◆	<b>Front Cover Plate BS4825-5 DN20</b>	1		313978.00	
415		▲	<b>Screw</b>	4		224186	
596		◆	<b>Complete transmission</b>	1		313817.01	

CVT - FEP encapsulated FKM

(◆) Sets of parts or (▲) parts available to order

Keep this parts lists with Installation, Operation and Maintenance Instructions

To order the required spare parts, indicate the appropriate CUM numbers



ZI la Plaine des Isles - 2 Rue des Caillottes 89000 AUXERRE - **France**  
Tél. : +33 3.86.49.86.40 or +33 3 86.49.87.09 - Fax : +33 3.86.49.87.17  
E-Mail : contact@blackmer-mouvex.com Internet : www.blackmer.com

1809 Century Avenue, Grand Rapids, Michigan 49503-1530, **U.S.A.**  
Telephone: (616) 241-1611 / Fax: (616) 241-3752  
E-Mail: blackmer@blackmer.com / Internet: www.blackmer.com